



Santa Susana Mountain Park Association

Dedicated to the Preservation of the Simi Hills and Santa Susana Mountains

P.O. Box 4831
Chatsworth, CA 91313-4831
ssmpa.com

June 9, 2015

Ms. Iris Chi
County of Los Angeles
Department of Regional Planning
Zoning Permits North Section
320 West Temple Street, Room
Los Angeles, CA 90012

By email to ichi@planning.lacounty.gov

Re: Termo North Aliso Field Project, Environmental Assessment No. 201300185

Santa Susana Mountain Park Association (SSMPA) calls upon Los Angeles County Department of Regional Planning and the Termo Company to thoroughly assess specific land-use-related impacts in light of two planned projects.

The **planned projects** are:

- A. **Rim of the Valley Corridor, National Park Service, April 2015**
www.nps.gov/pwro/rimofthevalley
- B. **Santa Susana Mountains Trails Master Plan, County of Los Angeles department of Parks and Recreation, May 2015**
<https://trails.lacounty.gov/Files/Documents/115/FINAL%20Santa%20Susana%20Mountains%20Final%20Trails%20Master%20Plan%20May%202015.pdf>

The **specific impacts** to be assessed are:

1. recreation,
2. public access,
3. aesthetic/visual resources, and
4. physical security.

Focus on Future

The scoping document *Notice of Preparation of a Environmental Impact Report (EIR) for the Termo North Aliso Field Project, April 13, 2015* **does not discuss expected impacts** in regard to highly probable **near-future land uses** entailed by the two **current plans** identified above. Here is an example of the lack of consideration of the impacts of planned land use innovations:

3.2.3 Recreation

The Oil Field is located on private property, and all current and proposed Oil Field operations take place on land that is not currently, or has in the past been, open to the public. No new fences or closures of open space areas are proposed as part of the Project. The proposed Project is not expected to have a significant impact to existing area recreational areas such as Rocky Peak Park, O'Melveny Park, Michael D. Antonovich Regional Park, Santa Clarita Woodlands Park, or the Michael D. Antonovich Open Space. (p.19)

National Park Service Plan

The map in Figure 5-4 (p.251 & attached hereto) of *Rim of the Valley Corridor* shows the Proposed Rim of the Valley (ROV) Trail crossing private property very close to Termo's proposed well sites. The National Park Service and other recreational organizations plan to collaborate to complete the ROV Trail through public lands, and also through private lands by means of voluntary trail easements and rights-of-way. (p.242)

County of Los Angeles Plan

The map in Figure 4.3-1 (p.130 & attached) of *Santa Susana Mountains Trails Master Plan* shows existing and proposed county recreational trails in the Aliso Canyon / Oat Mountain area. The County of Los Angeles plans to use a variety of tools to establish access rights for the proposed trails (section 4.3, pp.127-135). Figure 3.6.6-5 (p.97 & attached) shows the location of existing oil wells in the same area.

Summary

SSMPA urges the preparers of the Environmental Impact Report for the Termo North Aliso Field Project to evaluate in depth all predictable recreational, public access, aesthetic/visual, and site security impacts entailed by the federal and county plans for implementation of trails in the Santa Susana Mountains.

Sincerely,



Teena A. Takata
President, Santa Susana Mountain Park Association
P. O. Box 4831
Chatsworth, CA 91313-4831

Attachments:

1. Figure 5-4: Alternative C - Rim of the Valley Boundary Adjustment (NPS Preferred Alternative), p. 251, Rim of the Valley Corridor, Draft Special Resource Study and Environmental Assessment, April 2015.
2. Figure 4.3-1: Proposed Trail Ownership - NWSFV Subarea, p. 130, Santa Susana Mountains Final Trails Master Plan, May 2015.
3. Figure 3.6.6-5: Oil Wells in the Trails Master Plan Area, p. 97, Santa Susana Mountains Final Trails Master Plan, May 2015.

About Santa Susana Mountain Park Association:

Santa Susana Mountain Park Association is a 45 year-old non-profit organization based in Chatsworth, Los Angeles, California.

We represent approximately 700 members and concerned citizens, and we partner with many organizations to promote ecological and recreational quality in Southern California.

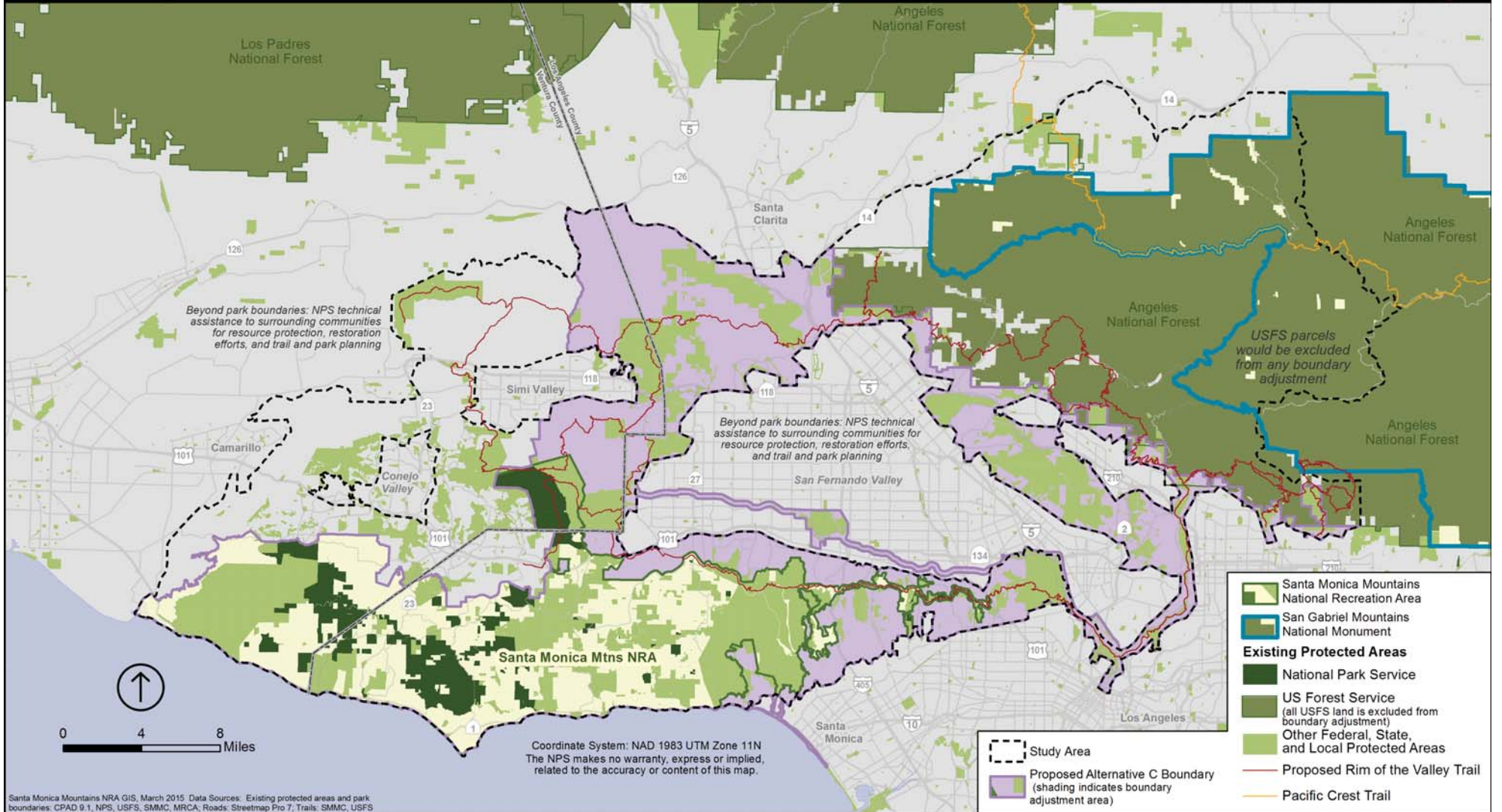
SSMPA's mission is to preserve and protect the Simi Hills, Santa Susana Mountains, and regional open space.

SSMPA Board of Directors:
Teena Takata, John Luker, Vanessa Watters, Bob Dager,
Carla Bollinger, Warren Stone, Donna Nachtrab, Tom Nachtrab, Wendi Gladstone

Alternative C (NPS Preferred Alternative)

Rim of the Valley Boundary Adjustment

National Park Service
U.S. Department of the Interior



Santa Monica Mountains NRA GIS, March 2015. Data Sources: Existing protected areas and park boundaries: CPAD 9.1, NPS, USFS, SMMC, MRCA; Roads: Streetmap Pro 7; Trails: SMMC, USFS

Figure 5-4: Alternative C - Rim of the Valley Boundary Adjustment (NPS Preferred Alternative)

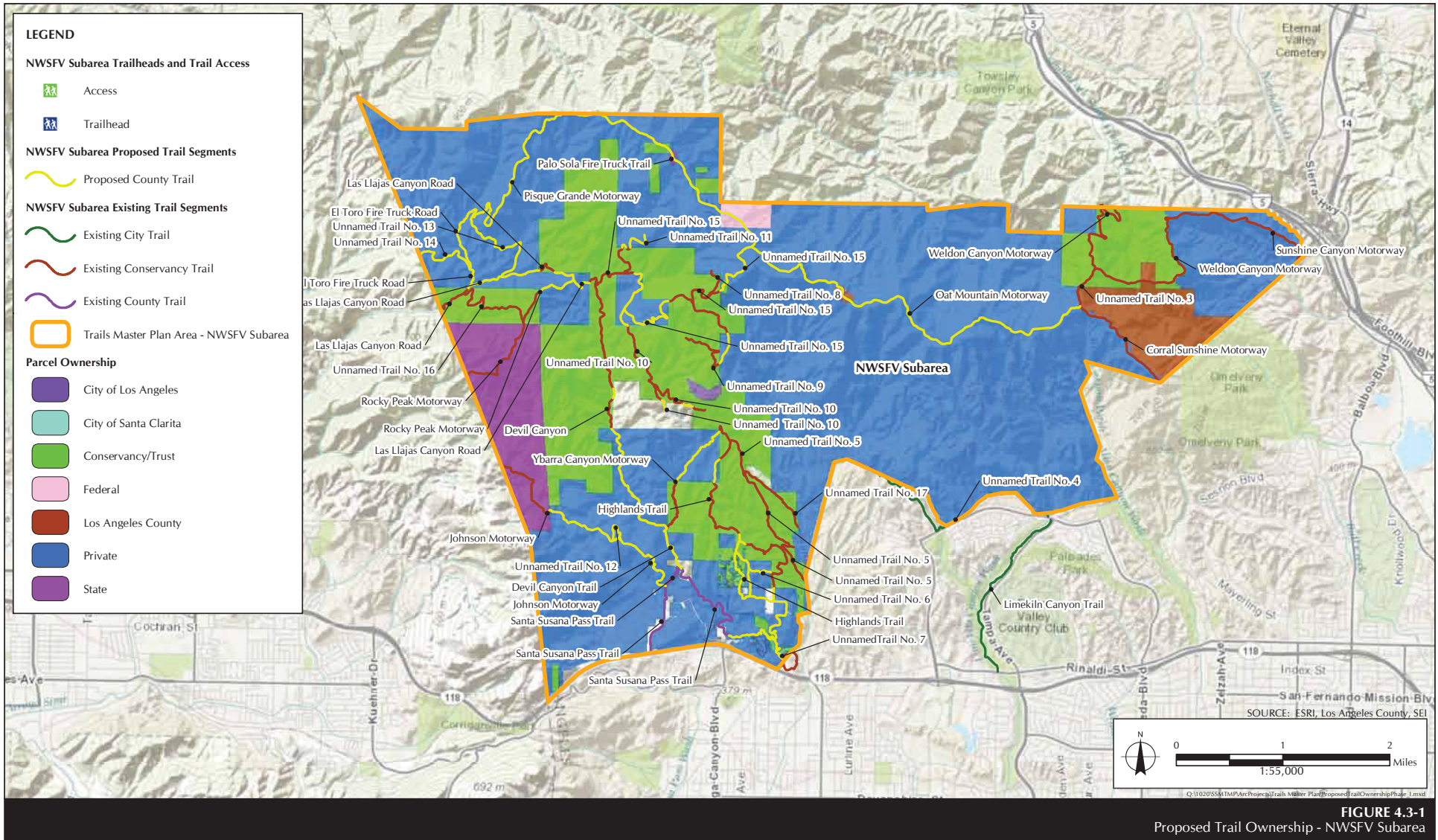


FIGURE 4.3-1
Proposed Trail Ownership - NWSFV Subarea

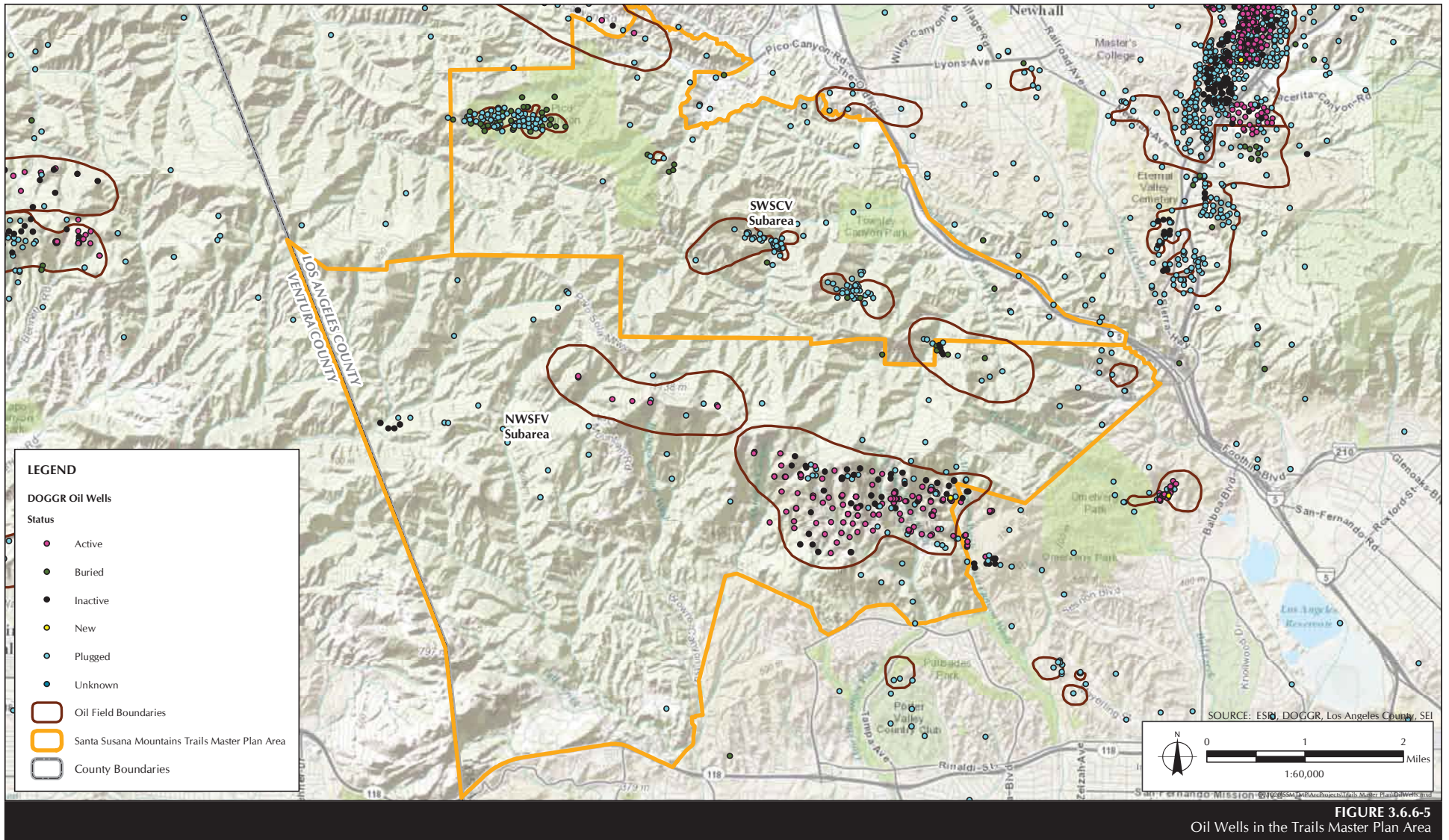


FIGURE 3.6.6-5
Oil Wells in the Trails Master Plan Area