



# Santa Susana Mountain Park Association

Volume 30, Issue 39

A Non-Profit 501(c)(4) Organization  
Incorporated August 31, 1971

## September 2004 Newsletter

### On Finding A New Home

For 20 years SSMPA has enjoyed the privilege of using a small meeting room in the Chatsworth Park South Parks & Recreation building where we displayed educational materials, photographs, local artifacts and milestones marking the way toward saving the land which is now the Santa Susana Pass State Historic Park. We estimate that well over 2,000 visitors have come inside the SSMPA Visitors Center to enjoy the displays and to learn about the history and facts of nature of the area. Last year we held our "In Honor of the Oak" event in the Center, upgrading our displays with special exhibits lent to us for the day by a museum. This spring volunteers and leaders in the community met inside and outside the Center to kick off Earth Day events.

There were numerous times, special events and on-going nature hikes where we've made good use of this space to share information with the community and inspire an appreciation for local natural resources.

Many SSMPA Board of Directors meetings were held in the room over these years, countless discussions were held, community events planned, problems solved and new ideas born.

The Foundation for the Preservation of the Santa Susana Mountains, in addition to the Santa Susana Mountain Task Force, held meetings there.

Now, we are disappointed to report that our Visitor's Center door is closed.

The City Parks & Recreation Dept. needed the room for their own purposes and ordered us to vacate. Our attempts to negotiate mutual use of the room did not bear fruit ...but we had to try.

So here we are now, our displays and materials in storage waiting for their next home. Councilman Greig Smith has recommended that we find a trailer to locate in Chatsworth Park South and said he would help secure electricity, permits and ramps for the handicapped. We are considering the purchase of a trailer but, of course, that could be costly. We are putting "feelers" out for the best solution to the dilemma of not having a permanent space. We are hereby including you, our membership, in the solution, because this is your organization. Perhaps you know of an available place or a good trailer that someone might be willing to sell or possibly donate to SSMPA. We welcome your suggestions.

Please bring your ideas to the general membership meeting on Monday, September 20<sup>th</sup> at 7:00 p.m. If you cannot attend, then please share by calling one of the Board Members listed below. Your assistance will be greatly appreciated!

*A big thank you and cheers of appreciation go to Life Member Barbara Pampalone for generously allowing us to store many of our items at her offices.*

#### SSMPA Executive Board 2004

Jan Miller, President	818-702-0854
Dorian Keyser, Vice President	818-345-3795
Diana Dixon-Davis, Treasurer	818-341-4242
Patty Miller, Recording Secretary	818-702-0854
Reid Bogert, Member at Large	323-661-4686
Susan Gerke, Member at Large	818-704-9304
Carla Henry, Member at Large	818-340-7357
Teena Takata, Member at Large	818-703-1040
Judy Garris, Member at Large	818-346-7654
Sandra Johnson, Member at Large	818-341-0341

### General Membership Program Meeting Monday, September 20, 2004:

Jim Kenney began wildflower photography in the Santa Monica Mountains in the Spring of 1974. This led to an intense interest in the natural history of Mediterranean plant communities, with a special emphasis on fire ecology. He has presented programs over the years to many environmental and conservation groups. Jim joined with hiking friend Milt McAuley to collaborate as the photographer for McAuley's "Wildflowers of the Santa Monica Mountains," published in 1985, with a 2nd edition in 1997. His photography also appears in Nancy Dale's "Flowering Plants of the Santa Monica Mountains," published in 1986 by the California Native Plant Society. We are indeed pleased that Jim has agreed to come to our meeting and share his knowledge and talent with us.

Jim's presentations show how wildflower populations and distribution each year are related to rainfall, drought, fires and the encroachment of non-native plants. The nearly completed Backbone Trail in the Santa Monicas will be shown. Differences between Santa Susana's natural history and the ocean-facing Santa Monicas will be discussed.

SSMPA General Membership Program meetings take place every 3rd Monday of the months during the months of September through November and January through May. Program meetings begin at 7:15 p.m. and generally conclude by 9:00 p.m. The venue is the Rockpointe Clubhouse, 22300 Devonshire, Chatsworth, on the south side, 1 block before entering Chatsworth Park South. Refreshments are served at program meetings. ▲



## RE-ENCHANTING THE CITY – A CONFERENCE - Saturday, October 16, 2004

Some days, we all just want to DO SOMETHING about the state of the world, especially about our unique corner of it! Well, now is your chance. And you will meet Mati Waiya of the CHUMASH TRIBE, Gordon LaBedz of the SIERRA CLUB, Tom LaBonge of the LA CITY COUNCIL, Melanie Winter of the RIVER PROJECT, Andy Lipkus of TREEPEOPLE, Paul Caron of CALTRANS, and the list of fascinating people goes on and on.....Let's get the Pacific Ocean in there too, with Mark Gold of HEAL THE BAY!

The Conference is about saving our wildlife. Not the Rock and Roll kind of wildlife. The kind that live in the mountains and hills around us, and call out sometimes with the coyote-bark or the owl whoo-who. They want to live peacefully in their wildland home, but something called "the 101" or "the 118" cuts right through their front yard, and they can't go over it or under it, only OVER IT. And that's the problem.

At this Conference, we are going to talk about creating and building GREEN CORRIDORS, both over and under and around these barriers we humans call FREEWAYS. It can be done, it is being done in other places, and we all need to help build them here in our neck of the woods and mountains. I mean *all of us*, get talking to the folk who will build these overpasses and help build them.

The Conference is free, and we're serving a free lunch too, for those who want to stay and participate. Nothing fancy, and no one's going to be dressed up either. So come and hear how the Mountain Lion got into Griffith Park (we think she came down the LA River) and why some of them are wearing "collars." FRIENDSHIP AUDITORIUM is the place, right next to Griffith Park, on Riverside Drive.

**Saturday, October 16** is when it is happening. More information can be had at 818-769-1521 or you may register at <http://www.gmrnet.com/ESTFSignup.html> so we are then able to send you a postcard or the brochure.

Please join us. Pull on your jeans and camp shirt and come sit and talk to us. Tell us what you think and give us some help here. It is a special day and a special group of people who come together to do something. We'd love it if you would join us.

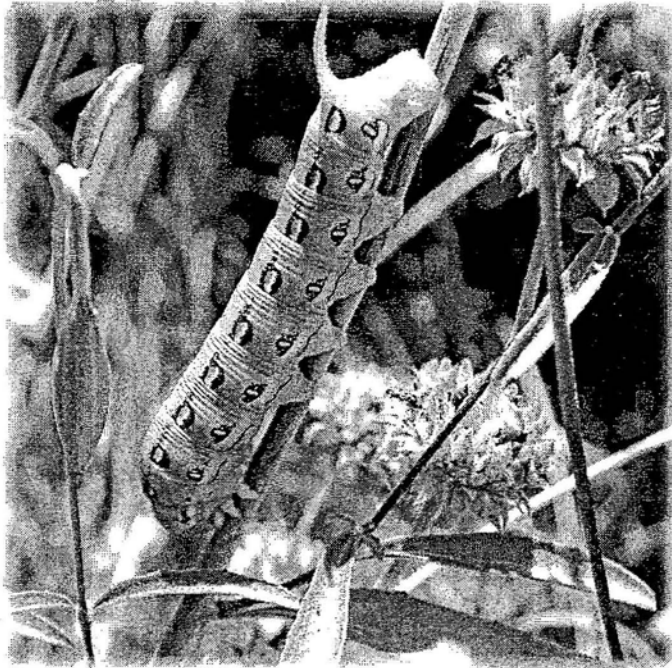
Rosemarie White,

Chair, Endangered Species Task Force, Sierra Club Angeles Chapter

We all  
need help  
crossing  
the road.



*Spirit of the  
Mountains*  
2004  
PHOTO CONTEST



Susan Malone, 2003 Honorable Mention-Animals

Share the wonder of the Santa Monica Mountains National Recreation Area with others. Enter the **Spirit of the Mountains Photo Contest**. Let your photographic imagination capture the essence of this hidden jewel. Categories are: (1) Scenic shots, (2) Plants, (3) Animals, (4) People in parklands, and (5) Photos taken by children under 12. Turn in entries between Sept. 1 and Sept. 30, 2004. For rules, regs and info, pick up an entry form @ [www.nps.gov/samo/photo](http://www.nps.gov/samo/photo) or call the National Park Service Visitor Center @ (805) 370-2301.

### The Santa Susana Mountain Task Force

(SSMTF) of the Sierra Club needs volunteers. If you are a member of the Sierra Club, you may become Outings Chair, Secretary, Treasurer, Conservation Chair, Political Chair, Education Chair or any other functional Chair you may like to create such as a Refreshment Chair. These positions may be shared by more than one person. The Outings Chair approves hikes written up by hike leaders and submits them to the Sierra Club Schedule according to editorial guidelines. The Conservation Chair, a required position, will need to attend at least five meetings of the Sierra Club's Conservation Committee per year. There is presently no one attending these meetings and we are in danger of losing our Task Force designation unless we fill this position or make a plea for an exemption.

Since there no longer is a Visitors' Center in Chatsworth Park South, we also need a new place to hold our meetings. If you know of a place for us to meet or for more information on SSMTF positions or other questions about the Task Force, call Judy Garris, Acting Chair of the SSMTF, at (818) 346-7654.

### Living Lightly

The environmental group *North East Trees* has published a 40-page booklet entitled "Living Lightly" encouraging a larger perspective or "watershed approach" to protecting our natural resources. To receive a copy, visit their website: [www.northeasttrees.org](http://www.northeasttrees.org) or call the office at (323) 441-8634.

After the last tree has been cut down,  
After the last river has been poisoned,  
After the last fish has been caught,  
Only then will you find  
That money cannot be eaten

*Cree Prophecy*

# ...LOCAL UPCOMING HIKES...

## Sierra Club Hikes

Tuesday, 9/21 - EZ Pace Hike in Newton Cyn/Backbone Trail: 8:00 a.m. - 1000' gain hike on scenic trail through oak woodlands, chaparral. Meet 8 a.m. Newton Cyn trailhead (take Kanan Rd off 101 Fwy, turn L, trailhead is just before 3<sup>rd</sup> tunnel, sign on R side). Bring lunch, water; lugsoles, hat. Ldrs: Ramona Dunn, Virve & Ants Leps.

Sunday, 9/26 - Whitney Cyn Park, Santa Clarita: 9:00 a.m. - Moderate 4 mi, 400' gain in new park along north slope of San Gabriel Mtns. Meet 9 am S end of San Fernando Rd in Santa Clarita (N 5 Fwy to 14 Fwy, R at first exit, San Fernando Rd to rideshare area). Bring water, snack, lugsoles. Ldrs: Henry Schultz, Donica Wood.

Tuesday, 9/28 - EZ Pace Hike, Malibu Creek State Park/Mash Site/Dam: 8:00 a.m. - 4-6 mi, 200' gain. Meet 8 a.m. dirt parking lot (1/4 mi from corner of Cornell & Mulholland Hwy on SE side). Bring water, lunch, lugsoles, hat, sunscreen. Ldrs: Ramona Dunn, Virve & Ants Leps.

Sunday, 10/3 - EZ Pace Hike, Malibu Bluffs: 10:00 a.m. - 4 mi walk around Malibu Bluffs Park and down a trail to the ocean. Meet 10 a.m. Malibu Bluffs ocean side parking lot (junction of PCH & Malibu Cyn Rd., Malibu). Bring water, lunch. Ldrs: Ron & Mary Ann Webster.

Tuesday, 10/5 - EZ Pace Hike, Ahmanson Ranch Parklands: 8:00 a.m. - 4-6 mi, 700' gain. Meet 8 a.m. trailhead (take 101 Fwy W, turn N on Valley Cir Dr to Vanowen, W on Vanowen 1/4 mi to gate on L side of street; park). Bring water, lunch, sunscreen, hat, lugsoles. Ldrs: Ramona Dunn, Virve & Ants Leps.

## Sierra Club / Santa Susana Mountains Task Force Hike

Sunday, 10/17 - Stage Coach Trail: 9:00 a.m. - Interpretative hike into history in our Santa Susana Pass State Historic Park. Meet 9:00 a.m. for a 4 mi (700' gain) loop up the Stage Coach Trail. From Topanga Cyn Blvd., turn W on Devonshire, drive into Chatsworth Park S to the 2nd parking lot. Wear long pants, lugsoles are preferred, bring water & snack. Serious rain cancels. Ldr: Lee Baum (818) 341-1850.

# ...AND EVENTS...

Tuesday, 9/21 - 7:30 p.m. - Sierra Club Meeting - San Fernando Valley. Dr. Paula Schiffman, Biology Professor at CSUN, will present an "Historical Ecology of the San Fernando Valley and LA Plain," explaining the complex and dynamic prairie ecosystem that covered much of the flatlands of our area before European settlement, at the Reseda Park Rec Hall, 18411 Victory Blvd. in Reseda.

Saturday, 9/25 - 12:30 p.m. (after the City of Santa Clarita's River Rally). Ever wonder where the CEMEX mine is supposed to be or where those little endangered fish live? Want to see where our water comes from or goes to, want to know more about the City trail system? Join SCOPE and Sierra Club for a tour of the Santa Clara River. Are you a teacher, scout leader or new resident? This tour is perfect for you! Comfortable, air conditioned buses equipped with restrooms load from the Rally site at Wiley Canyon east of Orchard Village Rd.) Advanced registration required. Cost \$8/person - includes box lunch. **RSVP MUST BE RECEIVED BY 9/18.** Contact Lynne: (661) 255-6899 or [www.SCOPE.org](http://www.SCOPE.org); send checks payable to SCOPE at PO Box 1182, Canyon Country, CA 91386.

Sunday, 10/3 - 11:00 a.m. to 4:00 p.m. The ever popular annual Pioneer Day, put on by the Chatsworth Historical Society, will take place at the beautiful Minnie Palmer Acre in Chatsworth Park South. There will be events and activities for both young and old. Get in touch with pioneer life, tour the old home, partake of chili, watch the blacksmith demonstration and all in all enjoy a colorful day with your family and community.



## Santa Susana Mountain Park Association

invites you to **JOIN / RENEW** (circle one).

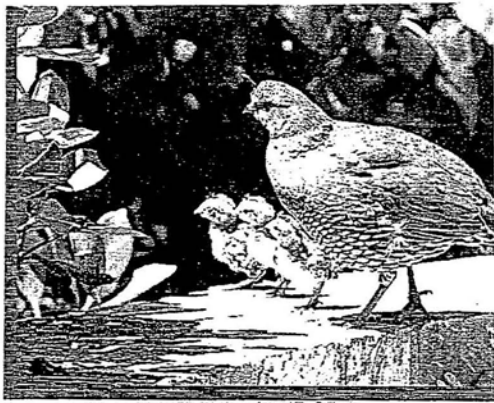
Investing in the future of our communities and its resources is probably one of the best expenditures of our time and efforts. Return this cutoff with your contribution lend your support. Make your check payable to SSMPA and send to SSMPA, P.O. Box 4831, Chatsworth, CA 91313-4831.

- Senior or Student (\$5.00)       Individual (\$10.00)       Family (\$15.00)  
 Life Member (\$100.00)       Business / Organization (\$25.00)

Name: \_\_\_\_\_ Phone: \_\_\_\_\_  
Street Address: \_\_\_\_\_ E-mail: \_\_\_\_\_  
City / State / Zip: \_\_\_\_\_  
Special Interest / Expertise: \_\_\_\_\_

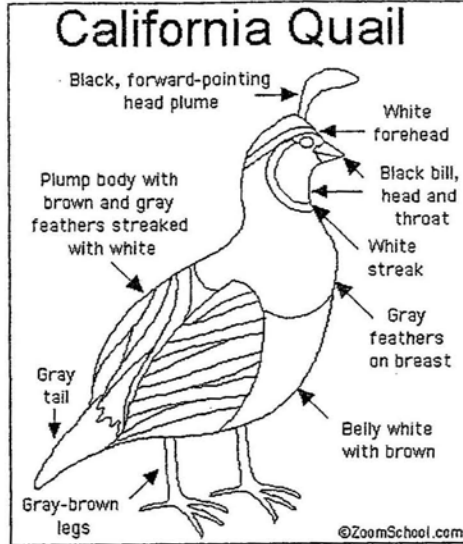
The purposes of the Santa Susana Mountain Park Association are the protection, preservation, restoration, and enhancement of the Santa Susana Mountains and Simi Hills as open space lands and wildlife corridors linking the Los Padres National Forest and San Gabriel Mountains, including the Angeles National Forest, to the Santa Monica Mountains; as habitats for plants and animals native to the Santa Susana Mountains and the Simi Hills; as locales of unique geologic formations; as sites of ethnological, archaeological and historical interests; to provide passive recreational opportunities and environmental education opportunities; and, to support the acquisition of new public parks, open space and conservation easements, the expansion of existing parks, participate in the planning of park infrastructure and programs, and support said programs. To find out how you can participate, contact Jan Miller at (818) 702-0854.

**Thank you for renewing:** Jeff & Grace Taylor, Jim & Maureen Shirley, Ann E. Monaco, Jim & Donna Swaveley, Budd & Bunny Levine, Judith Rothman, Barbara & Michael Haas, Lillian Hadaway, Larry Merken, Richard Klotz, Gail Boudreaux, Donald Murchie, Melissa Lovelady, Robert D. Lisenby, Richard Bublitz, Ellen M. Pifer, Nancy K. Schofield, Marie Burdick.  
**Welcome New Members:** Lorie Lussier-Lawrence, Debbie Pilkey, William E. Hughes, Dorothy E. Arnold.  
**YOUR SUPPORT IS APPRECIATED!**



Agoura Hills, California

## California Quail



The California Quail (*Callipepla californica*, also known as the valley quail) is a common bird from the western USA. Quails congregate in groups of 10 to 20 birds, called **coveys**. These plump birds live in woodlands, chaparral, desert edges, and grassy valleys. The quail's call sounds like chi--CA-go, where the middle sound (CA) is higher in pitch.

**Anatomy:** The California Quail is 9-10 inches (23-25.5 cm) long. It has a short, black bill. The quail has a tall, forward-pointing head plume. The flanks (sides) are brown with white streaks. The male has a black throat and a black face bordered by a white streak; there is also a white forehead. The female is duller and lacks the distinctive head markings.

**Diet:** This birds mostly eats seeds and leaves. It will also eat insects.

**Nest and Eggs:** The California Quail's nest is a simple scrape in the ground, lined with grass and leaves. Eggs are cream-colored with brown marking; females lay 6-17 eggs in each **clutch** (a set of eggs laid at one time).

**Subscribers & Members:** We appreciate you! Please note the renewal date on your label. If you are a Life Member, we thank you and invite your continued support with periodic donations to help SSMPA meet the costs of producing this newsletter. Susan Gerke, Editor



Santa Susana Mountain Park Association &  
 Foundation for the Preservation of the Santa Susana Mountains  
 P.O. Box 4831  
 Chatsworth, CA 91313-4831

ADDRESS SERVICE REQUESTED

Non-Profit  
 US Postage  
 Paid  
 Van Nuys, CA  
 Permit No. 761

**LIFE Member**  
 Nancy Razanski  
 22149 James Alan Circle  
 Chatsworth CA 91311-2051

